





## Assembly Instructions



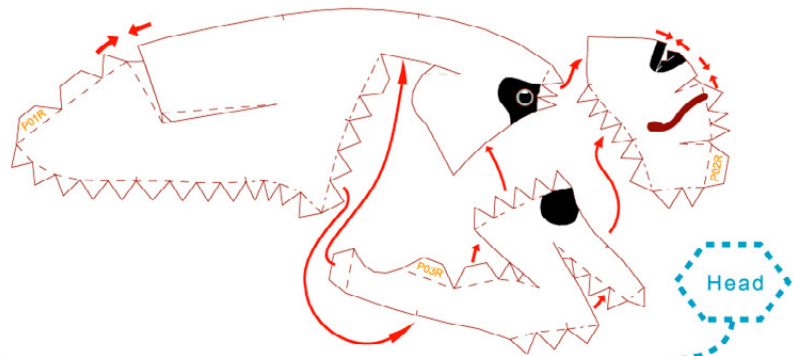
--- Outward fold



--- Inward fold

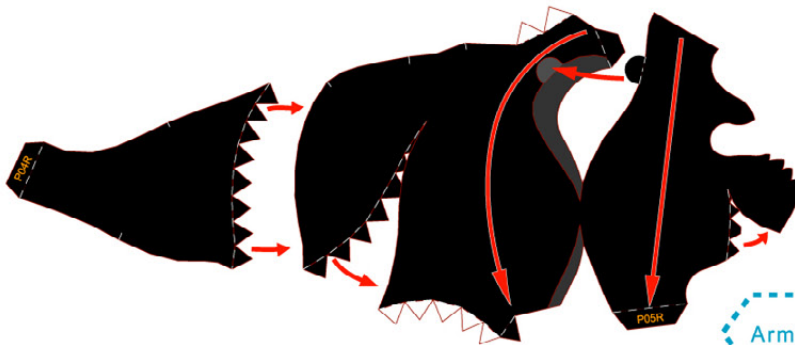


✗ Cut away parts



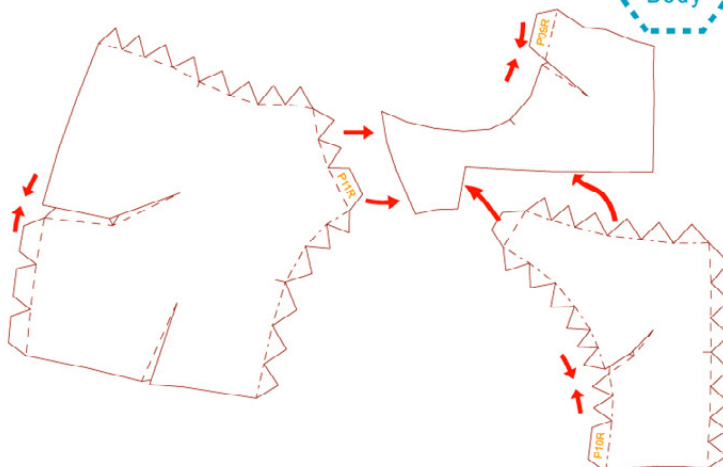
Head

Same on the other side

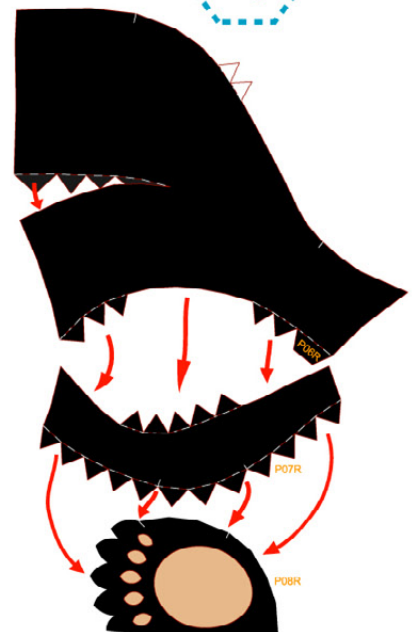


Arms

Body

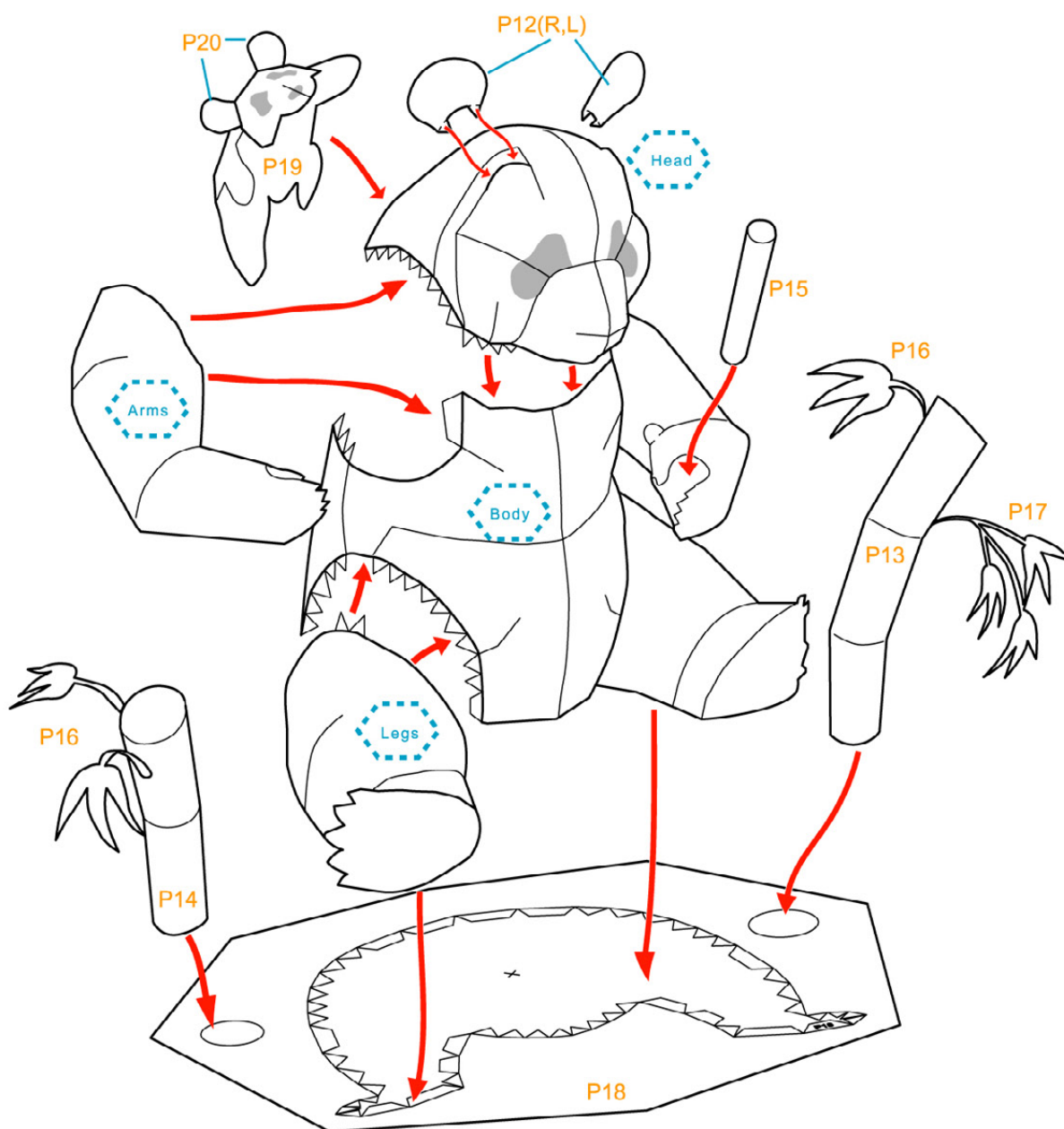


Legs





## Assembly Instructions







## Basic steps



Separate all parts along the lines. Mark their identity on the back to avoid confusion.



Cut out parts which are marked with an 'x'.



Use a pen whose ink has dried out, or a tracer, to trace lines first.



Fold all parts along the lines.

## Head



Fold and glue P01L, P02L and P03L respectively.



Glue the above parts together according to the assembly instructions to form the left part of the head. The instructions for the right part of the head (P01R, P02R and P03R) are the same as above.



Fold and glue P12R and P12L separately, then cut them into ears.



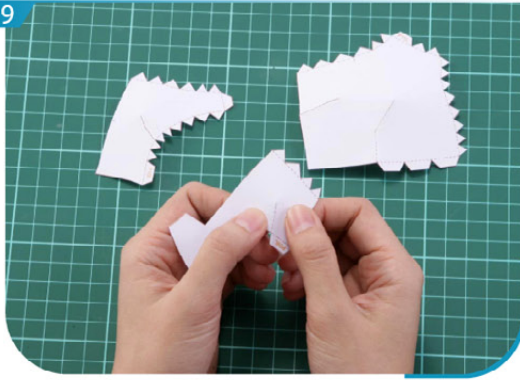
Assemble the left and right parts of the head, and glue the ears in the specified position. The head is now done.





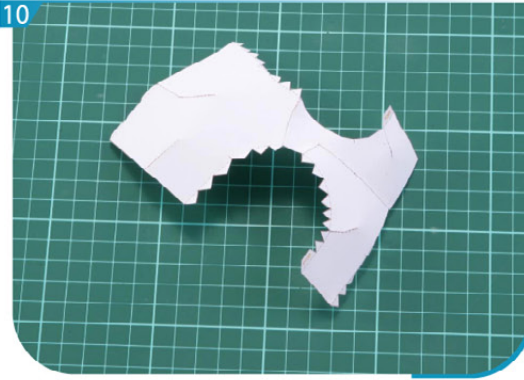
## Body

9



Fold and glue P09L, P10L and P11L respectively.

10



Glue the above parts together according to the assembly instructions to form the left part of the body.  
The instructions for the right part of the body (P09R, P10R and P11R) are the same as above.

## Hands

11



Fold and glue P04L and P05L respectively.

12



Glue the above parts together according to the assembly instructions to form the left hand.  
The instructions for the right hand (P04R and P05R) are the same as above.

## Legs

13



Fold and glue P06L, P07L and P08L respectively.

14



Glue the above parts together according to the assembly instructions to form the left leg.  
The instructions for the right leg (P06R, P07R and P08R) are the same as above.

## Little panda

15



Glue P20 to the specified position on P19 to form ears.

16



Fold and glue P19 well. The little panda is now done.



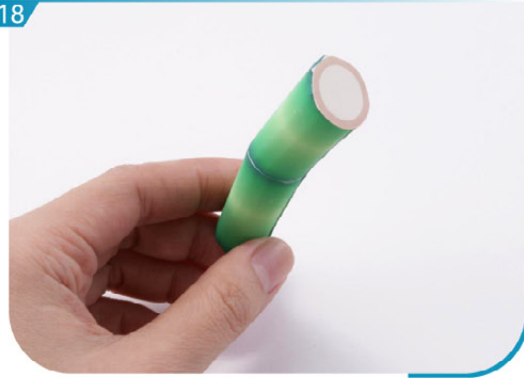
## Bamboo

17



First use a cylindrical pen to roll P13, P14, P15, P16 and P17.

18



Roll up and glue P13, P14 and P15 respectively, then glue the top to form bamboos.

19



Glue the leaves P16 and P17 to the bamboos randomly, referring to the sample model.



Finally, assemble all the parts and you have a pair of lovely pandas!