



P05



### Assembly Instructions

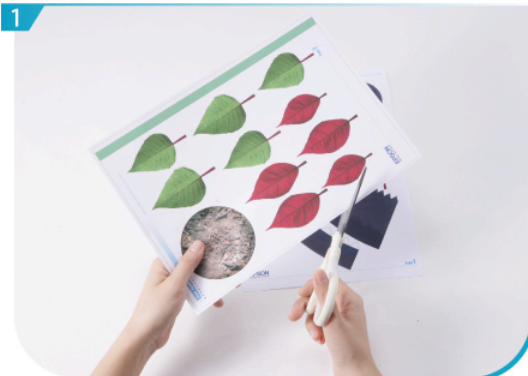


--- Outward fold

--- Inward fold

✗ Cut away parts

### Basic steps

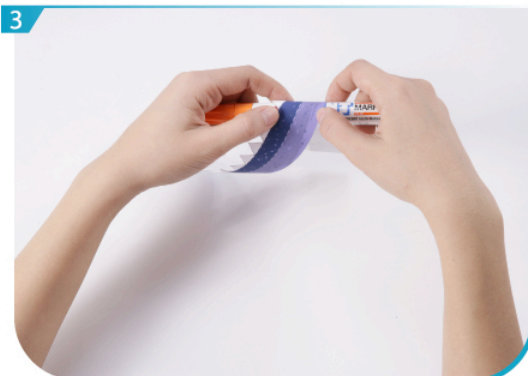


1 Separate all parts along the lines. Mark their identity on the back to avoid confusion.

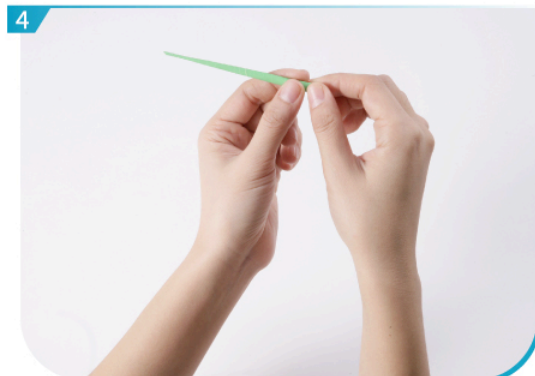


2 Use a pen whose ink has dried out, or a tracer, to trace lines first.

### Instructions



3 First, use a cylindrical pen to roll P02 and P03.



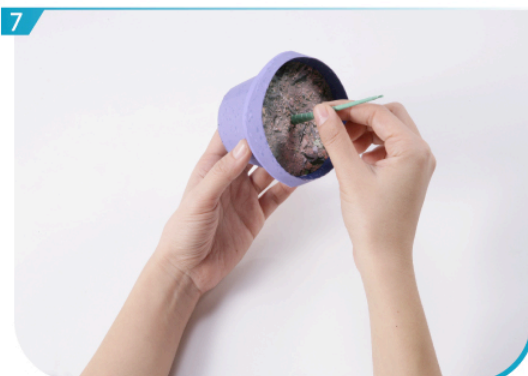
4 Roll green strips into sticks about 10cm long.



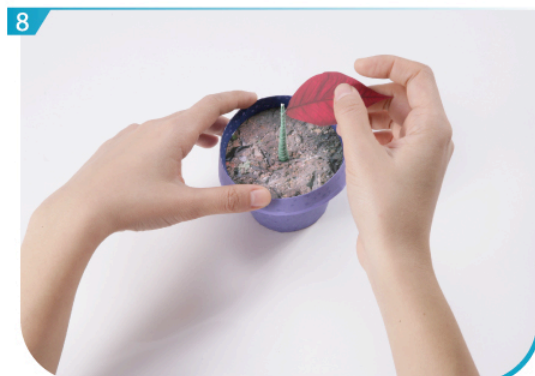
5 Roll and glue P02 and P03 separately, then bind them together.



6 Glue P05 and P01 to the top and the bottom of pot. The pot is done.



7 Glue green sticks to the pot



8 Finally, glue stamen, petals and leaves on to the stick to grow a Christmas flower of your choice.