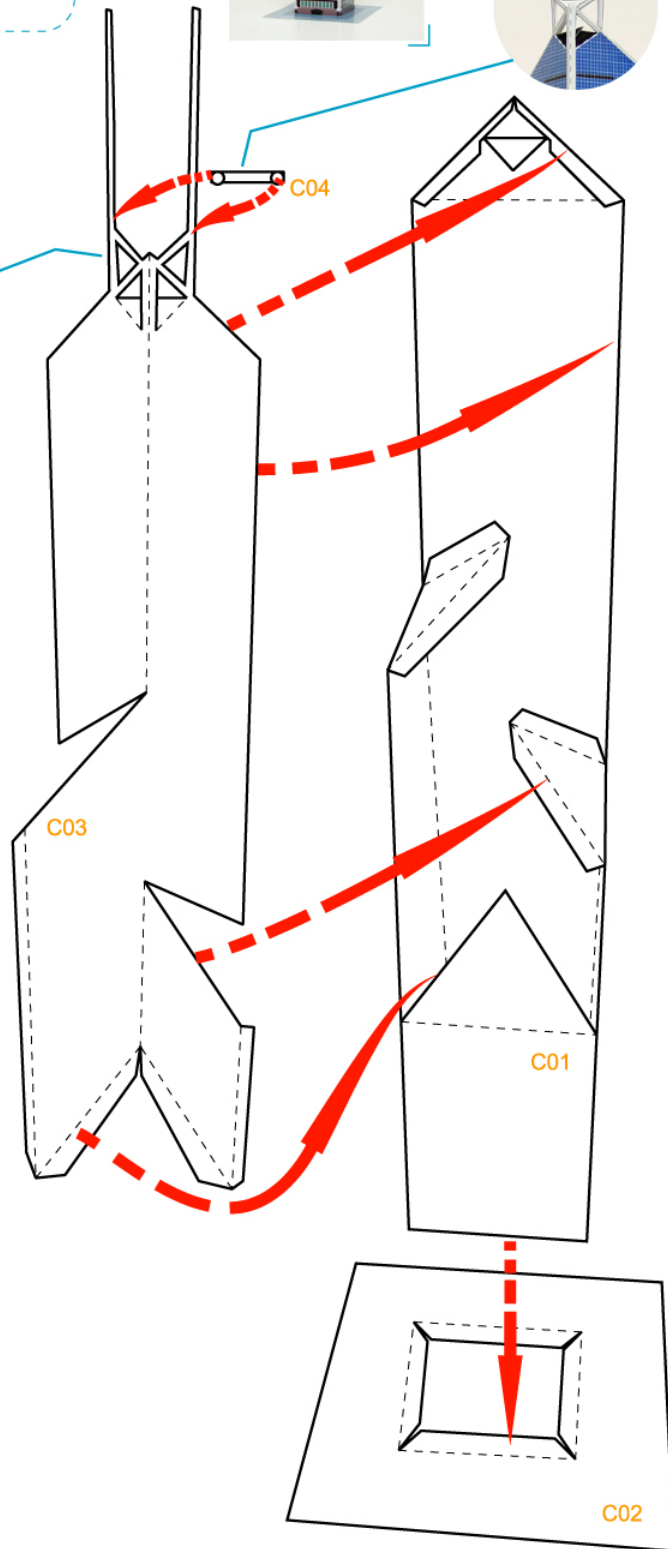
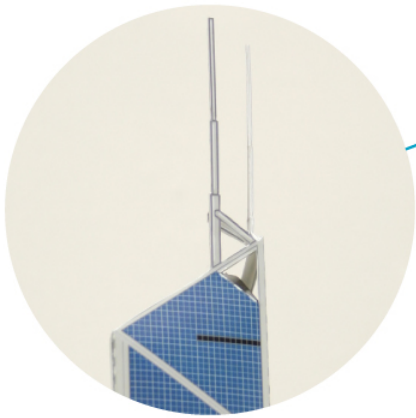
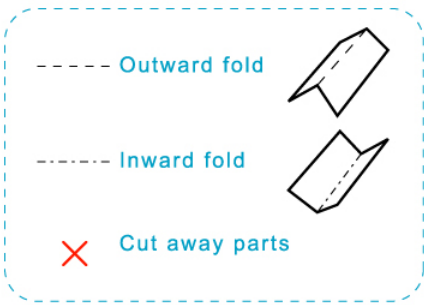


Assembly Instructions

--- Outward fold

--- Inward fold

✗ Cut away parts





Instructions



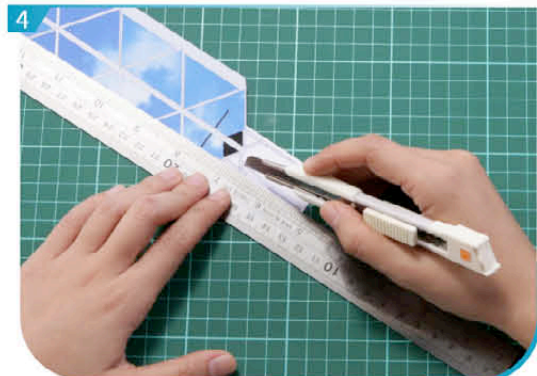
1 Separate all parts along the lines. Mark their identity on the back to avoid confusion.



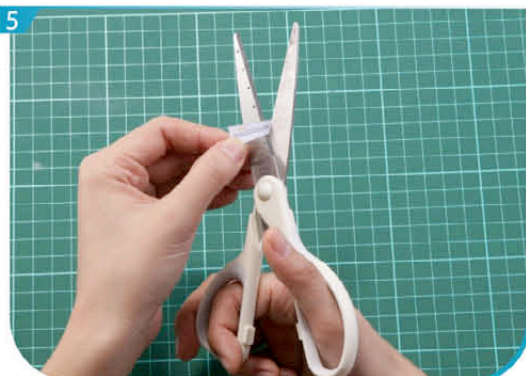
2 Cut out parts which are marked with an 'x'.



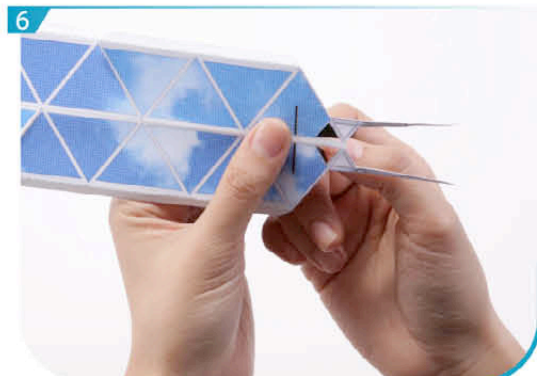
3 Use a pen whose ink has dried out, or a tracer, to trace lines first.



4 Fold and glue the top of C03, then make a fine cut.



5 Separate C04 along the line.



6 Cut out the black triangles on C01 and C03 along the lines. Fold them inwards.



7 Assemble C01, C03 and C04 according to the assembly instructions.



8 Glue the base C02 to the building. You now have one of the most majestic buildings in Hong Kong!