

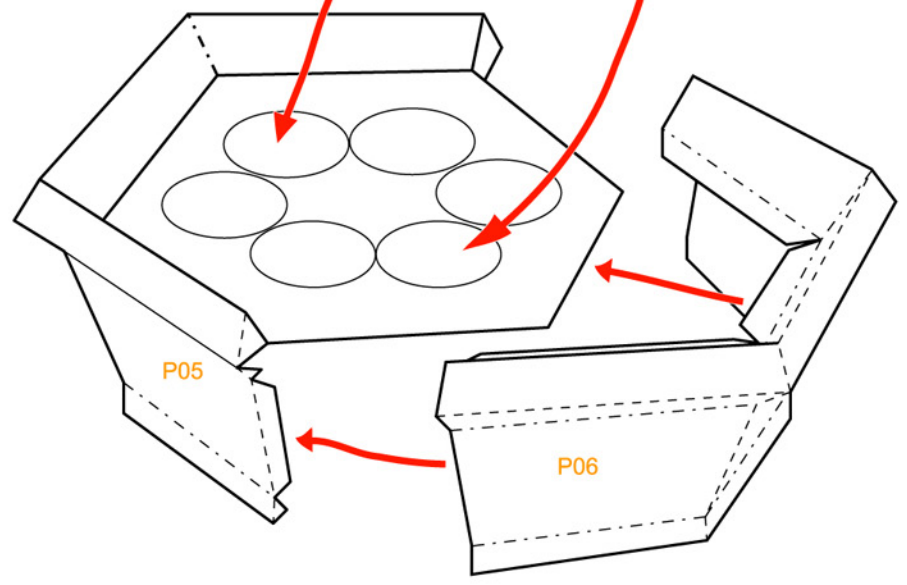
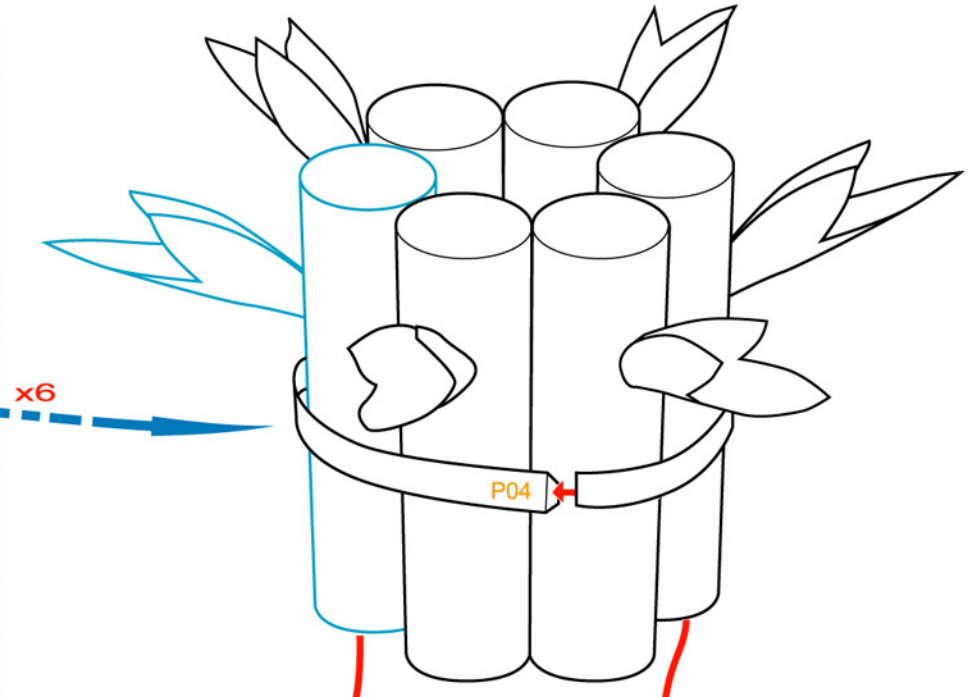
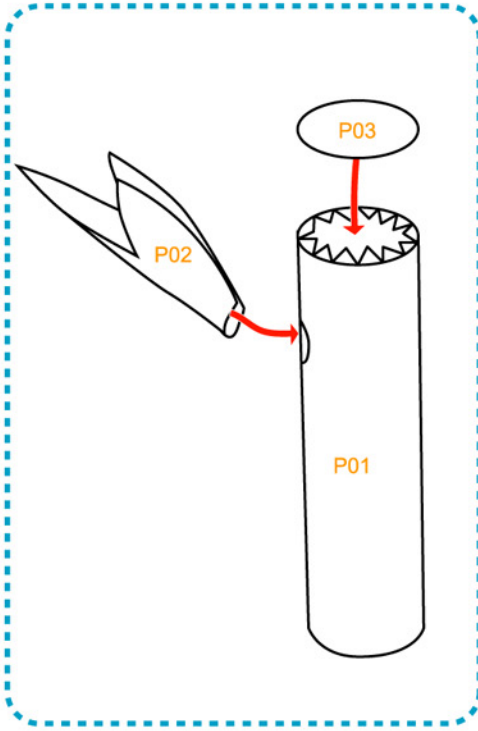
Assembly Instructions



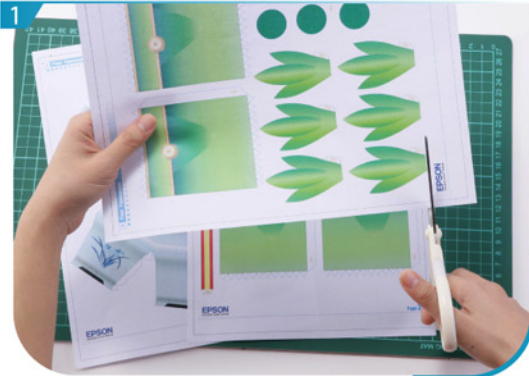
--- Outward fold

--- Inward fold

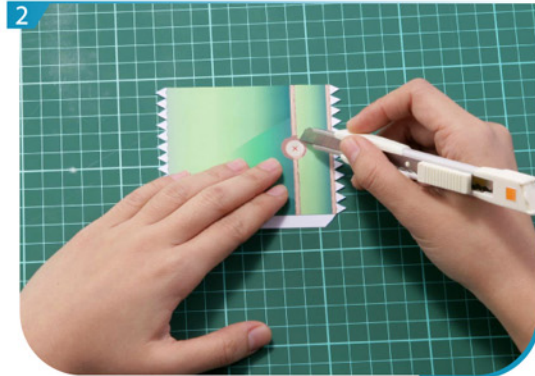
✗ Cut away parts



Instructions



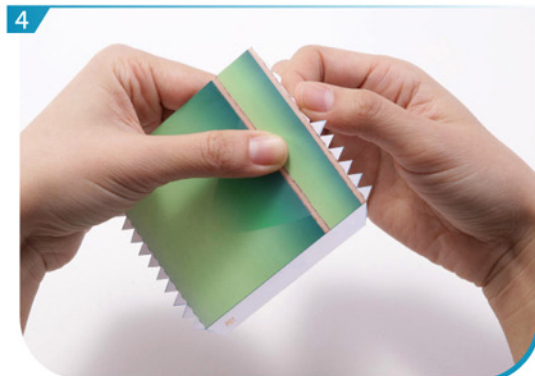
1 Separate all parts along the lines. Mark their identity on the back to avoid confusion.



2 Cut out parts which are marked with an 'x'.



3 Use a pen whose ink has dried out, or a tracer, to trace lines first.



4 Fold all parts along the lines.



5 Fold and glue P05 and P06 respectively, then assemble them to make a pot.



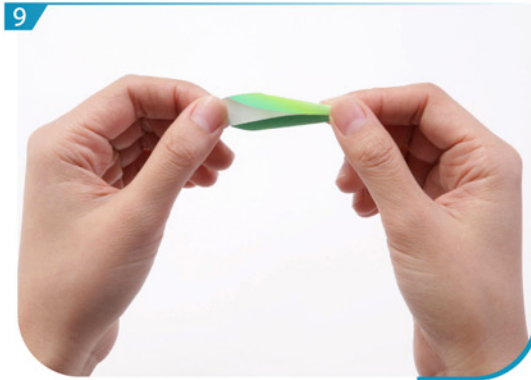
6 Use a cylindrical pen to roll P01s, and glue well.



7 Glue P03 on the top of the bamboo.



8 Paste all bamboos to the marked positions in the pot.



Roll and glue the leaves P02



Insert them into the marked positions on the bamboos.



Finally, put P04 around the bamboos and glue well.
You now have a bamboo which will bring you luck throughout the year!